

## Guide to determining your Mutineer's Age

If you own a mid (after April) 1975 thru 1980 Chrysler, Texas Marine International (TMI) or Wellcraft Mutineer, you can move on to the section named **Model Year Format**. These Mutineers have a HIN that is easy to decipher.

If you own a Gloucester, Cardinal or Nickels Mutineer, you can move on to the section named **Updated HIN Format**. These Mutineers have an updated HIN that is again easy to decipher.

If you have an early 1975 or older Chrysler, hold on to your hat! Chrysler used 2 different formats to indicate manufacturing data. The first we will call Chrysler 1 which appears on all Chrysler boats manufactured from the beginning. The second is the Federal Straight Year Format. Per Federal Regulation (Coast Guard), all boats manufactured on or after November 1, 1972 must bear a HIN. Chrysler continued Chrysler 1 while implementing the Federal Straight Year Format. And the evidence is that Chrysler started the Federal Straight Year Format before November 1, 1972 (see picture 1).

Chrysler 1 is a model line/serial number scheme (picture 1 top). For example, **283400470**. The first 5 numbers, 28340, represent the model line for Mutineers. The next 4 or 5 numbers (depending upon the serial number) are the serial number. This number appears on an engraved aluminum plate on the transom.

The Straight Year Format HIN can be found on a decal below the Chrysler 1 aluminum plate (picture 1 bottom). For example CBC 23781 0374 can be deciphered by going to the **Straight Year Format** section below.

If you don't find a Straight Year Format, your boat was built before November 1, 1972 or the decal is missing. You can use the serial number which gives us an idea, a guesstimate, as to when the boat was manufactured.

Serial Number Guesstimate Table:

0001-0047 1971

0048-0570 1972

0571-13727 1973

13728-29703 1974

29704-32561 1975

The above table was derived from the database in the Mutineer Yahoo Group.

## Straight Year Format.

In this format, characters nine through twelve are simply the month and year of production. In the example below 1272, “12” means August and “72” means 1972. The problem with this format is that the manufacturer was not given the option of identifying the vessel's model year. You can find this HIN located on your transom, starboard side, about 1 inch below the deck.



For example, XYZ12345 0374

XYZ = MIC (see table last page)

12345 = Hull Serial Number

0374 = Date of Certification – March 1974

## Model Year Format

The ninth character in the Model Year Format will always be an M. This "M" identifies the HIN as Model Year format. The 10<sup>th</sup> and 11<sup>th</sup> characters indicate year and the twelfth month. In the example below 73E, “73” means 1973 and “E” means December. Chrysler used this format beginning in April (estimate) 1975. You can find this HIN located on your transom, starboard side, about 1 inch below the deck (picture 2).



### Month codes:

AUG	A	FEB	G
SEP	B	MAR	H
OCT	C	APR	I
NOV	D	MAY	J
DEC	E	JUN	K
JAN	F	JUL	L

**For example, XYZ54321M73E**

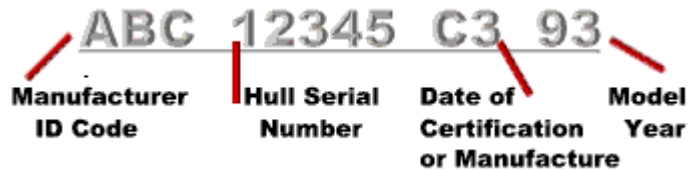
XYZ = MIC (see table last page)

54321 = Hull Serial Number

M73E = Date of Certification

## Updated HIN Format

From August 1984 on the updated HIN was used. You can find this HIN located on your transom, starboard side, about 1 inch below the deck.



JAN	A	JUL	G
FEB	B	AUG	H
MAR	C	SEP	I
APR	D	OCT	J
MAY	E	NOV	K
JUN	F	DEC	L

**For example, XYZ54321E708**

XYZ = MIC (see table below)

54321 = Hull Serial Number

E7 = Date of Certification of Manufacture

08 = Model Year

Notice that the Coast Guard changed the month code A = January, B = February, etc.

MICs (Manufacturer Identification Code) assigned by the Coast Guard to the manufacturer:

CBC - Chrysler Boat Corporation, 1971-1980

VVV - Texas Marine International (TMI), 1980-1981

WEL - Wellcraft Boat Company, 1982-1984

GYI - Gloucester Yachts, 1985

OTO - Cardinal Yachts, 1986

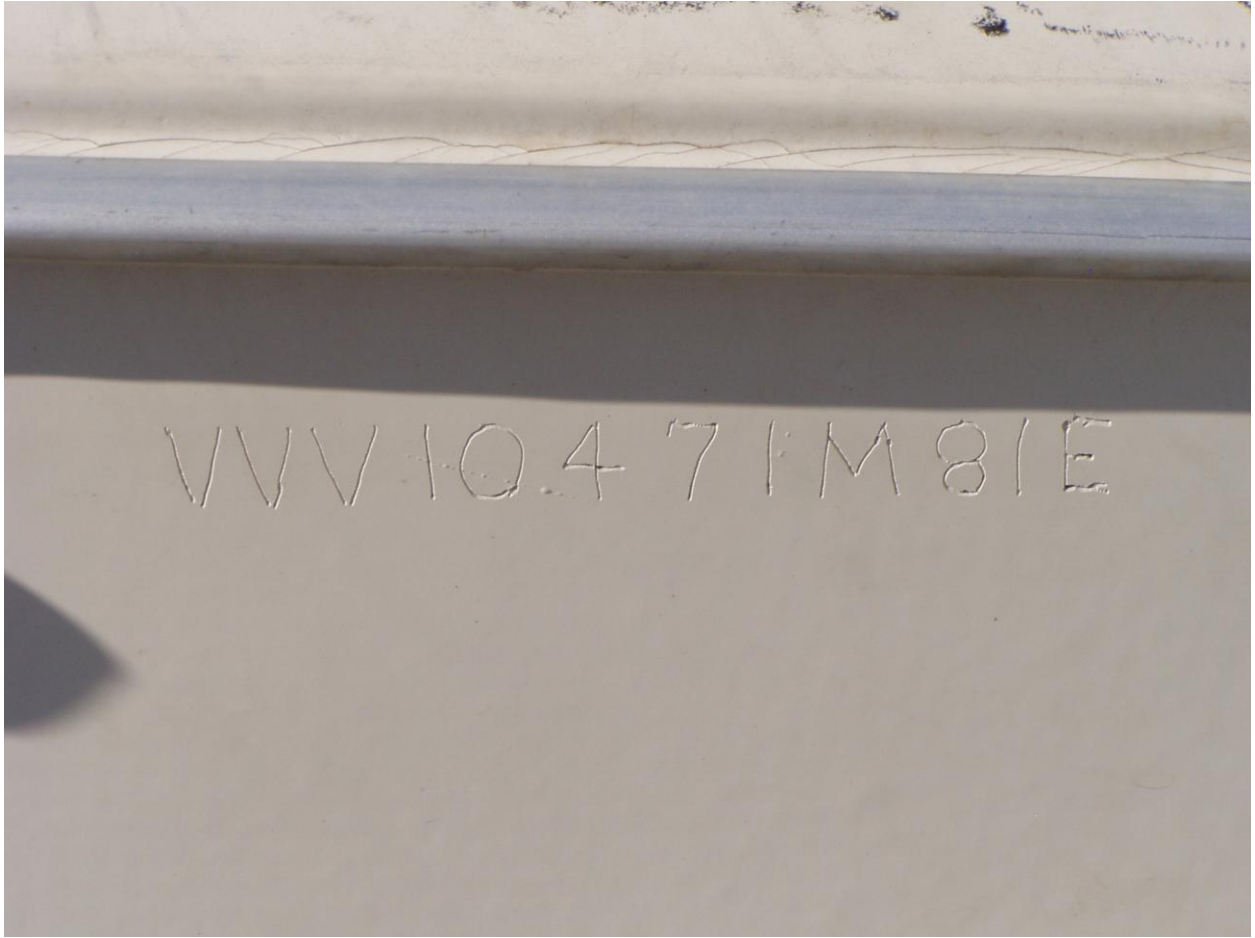
NBI - Nickels Boat Works, 2008 – present



Picture 1



Picture 2



Very rare TMI Mutineer with a hand-etched HIN.